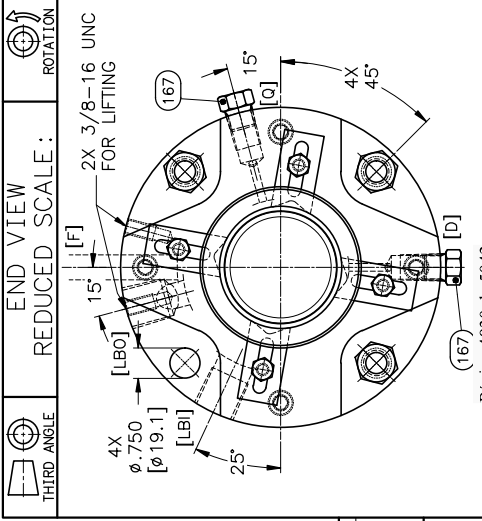


NOTES:

1. FOR INSTALLATION AND OPERATING INSTRUCTIONS SEE APPROPRIATE FLOWSERVE INSTALLATION SHEET (FIS).
2. DISENGAGE SETTING DEVICES (#103) BEFORE START-UP.
3. TIGHTEN SETSCREWS EQUALLY, IN 4 STEPS. FINAL TORQUE: 290 IN-LBF [33 Nm] .
4. EN10204 (3.1) CERTIFICATION (CERTS12) REQUIRED FOR ITEMS #1, #11 & #11.1.
5. FPD TO APPROVE THE PROPOSED DISTANCE AT STUDS - APPROVED.
6. FPD TO APPROVE THE LOCATION AND ORIENTATION OF PIPING CONNECTIONS IN BOTH VIEWS - APPROVED.



THIS DRAWING AND ANY DESIGN, DEVELOPMENT, INVENTION OR COPYRIGHT WHICH IT MAY EMBODY OR REPRESENT ARE THE PROPERTY OF FLOWSERVE CORPORATION. THIS DRAWING MAY NOT BE REPRODUCED, NOR ANY SUBJECT MATTER SHOWN HEREIN MAY BE MANUFACTURED, WITHOUT WRITTEN PERMISSION FROM AN AUTHORIZED AGENT OF FLOWSERVE CORPORATION.	DIM'S ARE REF UNLESS SPECIFIED OTHERWISE.	C/A2 JULY 2009
	DIM'S IN INCHES [MM]	

BILL OF MATERIAL NO: B0440361-Q1				1 SUGGESTED SPARE PARTS 2 CODE/DESC/1/OFF. STD/1	
NO	PARTCODE	QTY	DESCRIPTION	MATERIAL	12
1	C03647420B-Q1	1	SLEEVE LH	316	
5	4R533620B	3	PIN	316	
2	C0307496MR	3	SEAL DRIVE	17-4 PH COND H1150	
2.1	C0307492MR	3	SEAL DRIVE	17-4 PH COND H1150	
11.1	C04472340B-Q1	1	GLAND	316	
5.1	670421DB	3	PIN	316	
11.1	C04472350B-Q1	1	GLAND	316	
5.2	670421DB	3	PIN	316	
5.3	670419DB	1	PIN	316	
13.3	568238AD	1	SEAT GASKET	PERFLUOROELASTOMER	
13.1	568238AD	1	SEAT GASKET	PERFLUOROELASTOMER	
14	C0307263GE	1	STATIONARY FACE	CARBON	
14.1	C0307203GE	1	STATIONARY FACE	CARBON	
15.1	4N10021SL	1	ROTATING FACE	SILICON CARBIDE	
16	C0298521NL	15	COIL SPRING	ALLOY C-276	
16.1	C0298521NL	15	COIL SPRING	ALLOY C-276	
17.1	C03074130B	1	SPRING HOLDER	316	
17.1	C03073830B	1	SPRING HOLDER	316	
18.1	568356AD	1	GLAND GASKET	PERFLUOROELASTOMER	
18.1	568254AD	1	GLAND GASKET	PERFLUOROELASTOMER	
19	568232AD	1	SLEEVE GASKET	PERFLUOROELASTOMER	
24	C0174033GE	1	GLAND BUSHING	CARBON	
40.1	C02454590B	3	BHCS #8-32 X 1/4 (UNC)	316	
40.1	C02454590B	3	BHCS #8-32 X 1/4 (UNC)	316	
40.2	4N01768C1	4	SHCS 3/8-16 X 2	ALY STL, ZINC PLTD	
40.2	4N01768C1	4	SHCS 5/16-18 X 1/2	ALY STL, ZINC PLTD	
44	C03074730B	1	BACKING RING	316	
44.1	C03074430B	1	BACKING RING	316	
57	4R03436C1	8	SSCP 3/8-16 X 1/2	ALY STL, ZINC PLTD	
58	4R113066MR	1	DRIVE COLLAR	17-4 PH COND H1150	
71.1	568154AD	1	O-RING GASKET	PERFLUOROELASTOMER	
71.1	568154AD	1	O-RING GASKET	PERFLUOROELASTOMER	
76	568153AD	1	ROTATING FACE GASKET	PERFLUOROELASTOMER	
103.1	568153AD	1	ROTATING FACE GASKET	PERFLUOROELASTOMER	
176	4R151300B	4	SETTING DEVICE	316	
140	C0364216FJ	1	INNER RING	BRONZE	
1167	4R3000X953	2	PIPE PLUG 3/8 NPT HEX HEAD SA-479	TY316/316L	

[F] FLUSH

[LBI] LIQUID BUFFER INLET 3/4 " NPT

[LBO] LIQUID BUFFER OUTLET 3/4 " NPT

[Q] QUENCH

[D] DRAIN

BY PUMP CASE

119.6-175.1 PSIA

RPM: 4600

EQUIP SERIAL NO.: 18AE0026

EQUIP ITEM NO.: Estacion Chorety

API PLAN: 11/53B

API CODE: 20W-COW

SERVICE: PIPELINE

API 682 CODE: 23A-FIN-070-11/53B

DISCHARGE PRESSURE: 1

MAX 1444 PSIG (DO @ 9000BPD)

RATED & NORMAL 1114 PSIG (GE @ 8000BPD)

MINIMUM 921 PSIG (GLP @ 7000BPD)

SEAL TYPE: HSH/HSH

SEAL SIZE: 3.500/3.500

SEAL CONFIG: DUAL PRESSURIZED-FACE TO FACE-CARTRIDGE

EQUIP MFR: FLOWSERVE

EQUIP MODEL: DMX / 3X4X9DMX/ 10 / 10 STAGES

EQUIP DWG: 275D64X17 REV. B

INSTR: FTS230

SCALE: TO SCALE

DRAWN: OSMERIANDEZ

DATE: 25-MAR-2019

CHKD: SMOALES

APPROV:

JOB NO: 2W-30432

SCALE: TO SCALE

DRAWN: OSMERIANDEZ

DATE: 25-MAR-2019

CHKD: SMOALES

APPROV:

JOB NO: 2W-30432

SEAL TYPE: HSH/HSH

SEAL SIZE: 3.500/3.500

SEAL CONFIG: DUAL PRESSURIZED-FACE TO FACE-CARTRIDGE

EQUIP MFR: FLOWSERVE

EQUIP MODEL: DMX / 3X4X9DMX/ 10 / 10 STAGES

EQUIP DWG: 275D64X17 REV. B

INSTR: FTS230

SCALE: TO SCALE

DRAWN: OSMERIANDEZ

DATE: 25-MAR-2019

CHKD: SMOALES

APPROV:

JOB NO: 2W-30432

SCALE: TO SCALE

DRAWN: OSMERIANDEZ

DATE: 25-MAR-2019

CHKD: SMOALES

APPROV:

JOB NO: 2W-30432

SEAL TYPE: HSH/HSH

SEAL SIZE: 3.500/3.500

SEAL CONFIG: DUAL PRESSURIZED-FACE TO FACE-CARTRIDGE

EQUIP MFR: FLOWSERVE

EQUIP MODEL: DMX / 3X4X9DMX/ 10 / 10 STAGES

EQUIP DWG: 275D64X17 REV. B

INSTR: FTS230

SCALE: TO SCALE

DRAWN: OSMERIANDEZ

DATE: 25-MAR-2019

CHKD: SMOALES

APPROV:

JOB NO: 2W-30432

SCALE: TO SCALE

DRAWN: OSMERIANDEZ

DATE: 25-MAR-2019

CHKD: SMOALES

APPROV:

JOB NO: 2W-30432

SEAL TYPE: HSH/HSH

SEAL SIZE: 3.500/3.500

SEAL CONFIG: DUAL PRESSURIZED-FACE TO FACE-CARTRIDGE

EQUIP MFR: FLOWSERVE

EQUIP MODEL: DMX / 3X4X9DMX/ 10 / 10 STAGES

EQUIP DWG: 275D64X17 REV. B

INSTR: FTS230

SCALE: TO SCALE

DRAWN: OSMERIANDEZ

DATE: 25-MAR-2019

CHKD: SMOALES

APPROV:

JOB NO: 2W-30432

SCALE: TO SCALE

DRAWN: